

Trombone Baritone

One Octave Major and Minor Scales

Boltz Bands

Concert C Major

Concert C Major scale in bass clef, 4/4 time. The scale is written in two lines: the first line shows the ascending scale (C2 to C3) and the second line shows the descending scale (C3 to C2). The notes are: C2, D2, E2, F2, G2, A2, B2, C3 (ascending); C3, B2, A2, G2, F2, E2, D2, C2 (descending). The piece concludes with a double bar line and a common time signature.

7 Concert A Minor

Concert A Minor scale in bass clef, 4/4 time. The scale is written in two lines: the first line shows the ascending scale (A2 to A3) and the second line shows the descending scale (A3 to A2). The notes are: A2, B2, C3, D3, E3, F3, G3, A3 (ascending); A3, G3, F3, E3, D3, C3, B2, A2 (descending). The piece concludes with a double bar line and a common time signature.

13 Concert F Major

Concert F Major scale in bass clef, 4/4 time. The scale is written in two lines: the first line shows the ascending scale (F2 to F3) and the second line shows the descending scale (F3 to F2). The notes are: F2, G2, A2, B2, C3, D3, E3, F3 (ascending); F3, E3, D3, C3, B2, A2, G2, F2 (descending). The piece concludes with a double bar line and a common time signature.

19 Concert D Minor

Concert D Minor scale in bass clef, 4/4 time. The scale is written in two lines: the first line shows the ascending scale (D2 to D3) and the second line shows the descending scale (D3 to D2). The notes are: D2, E2, F2, G2, A2, B2, C3, D3 (ascending); D3, C3, B2, A2, G2, F2, E2, D2 (descending). The piece concludes with a double bar line and a common time signature.

25 Concert Bb Major

Concert Bb Major scale in bass clef, 4/4 time. The scale is written in two lines: the first line shows the ascending scale (Bb2 to Bb3) and the second line shows the descending scale (Bb3 to Bb2). The notes are: Bb2, C3, D3, Eb3, F3, G3, Ab3, Bb3 (ascending); Bb3, Ab3, G3, F3, Eb3, D3, C3, Bb2 (descending). The piece concludes with a double bar line and a common time signature.

31 Concert G Minor

Concert G Minor scale in bass clef, 4/4 time. The scale is written in two lines: the first line shows the ascending scale (G2 to G3) and the second line shows the descending scale (G3 to G2). The notes are: G2, A2, B2, C3, D3, Eb3, F3, G3 (ascending); G3, F3, Eb3, D3, C3, B2, A2, G2 (descending). The piece concludes with a double bar line and a common time signature.

37 Concert Eb Major

Concert Eb Major scale in bass clef, 4/4 time. The scale is written in two lines: the first line shows the ascending scale (Eb2 to Eb3) and the second line shows the descending scale (Eb3 to Eb2). The notes are: Eb2, F2, G2, Ab2, Bb2, C3, D3, Eb3 (ascending); Eb3, D3, C3, Bb2, Ab2, G2, F2, Eb2 (descending). The piece concludes with a double bar line and a common time signature.

43 Concert C Minor

Concert C Minor scale in bass clef, 4/4 time. The scale is written in two lines: the first line shows the ascending scale (C2 to C3) and the second line shows the descending scale (C3 to C2). The notes are: C2, D2, Eb2, F2, G2, Ab2, Bb2, C3 (ascending); C3, Bb2, Ab2, G2, F2, Eb2, D2, C2 (descending). The piece concludes with a double bar line and a common time signature.

49

Concert Ab Major



55

Concert F Minor



61

Concert Db Major



67

Concert Bb Minor



73

Concert Gb Major



79

Concert Eb Minor



85

Concert Cb Major



91

Concert Ab Minor



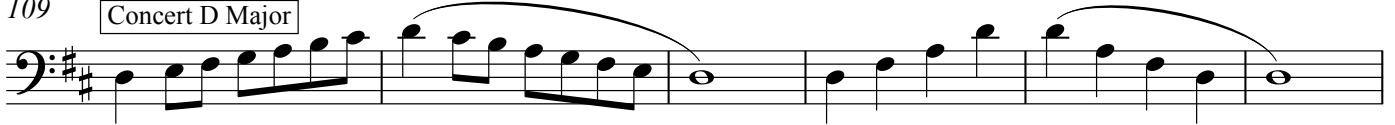
97 Concert G Major



103 Concert E Minor



109 Concert D Major



115 Concert B Minor



121 Concert A Major



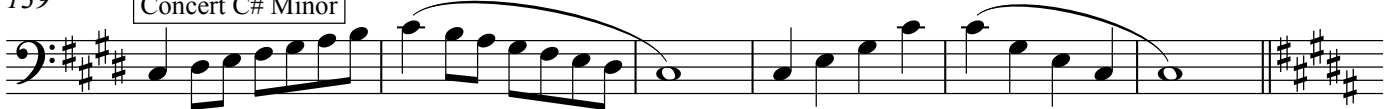
127 Concert F# Minor



133 Concert E Major



139 Concert C# Minor



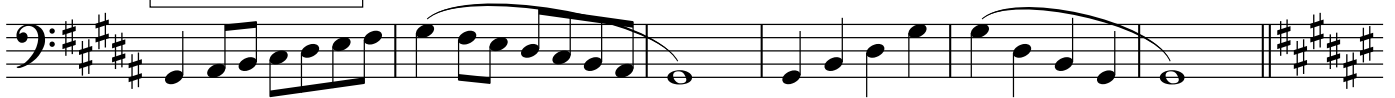
145

Concert B Major



151

Concert G# Minor



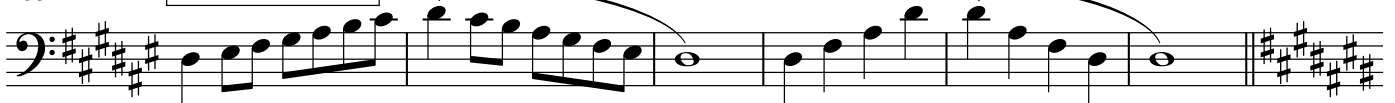
157

Concert F# Major



163

Concert D# Minor



169

Concert C# Major



175

Concert A# Minor

